



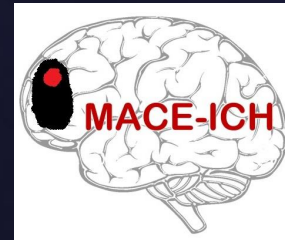
University of  
**Nottingham**

UK | CHINA | MALAYSIA



# Mannitol for Cerebral oEdema after IntraCerebral Haemorrhage (MACE- ICH): a feasibility trial

## PHARMACY TRAINING



IRAS: 1004870

CTA: 19162/0239/001-0001

**Chief Investigator:** Dr Kailash Krishnan

Consultant Stroke Physician, Nottingham University Hospitals NHS  
Trust

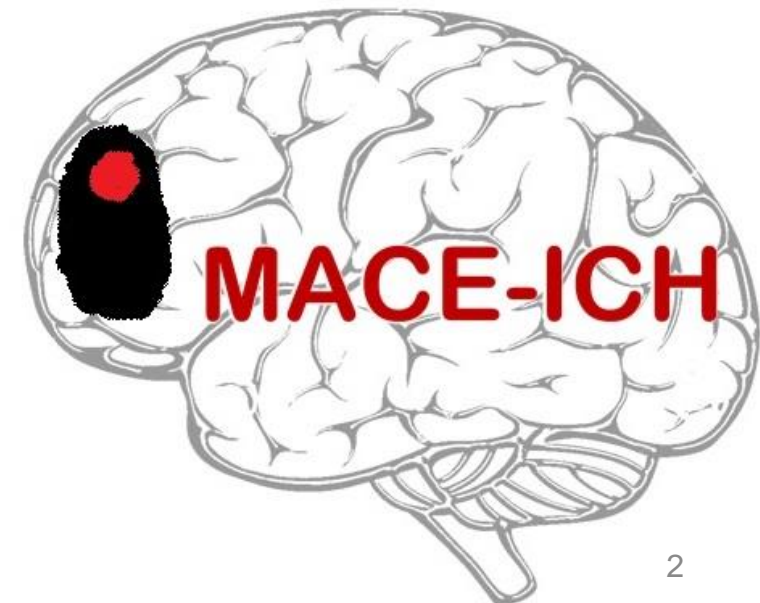
Associate Professor of Stroke Medicine, University of Nottingham

FUNDED BY

**NIHR** | National Institute for  
Health and Care Research



- Funding disclosures
- Background
- Rationale
- Study design, objectives & outcomes
- Eligibility
- MACE-ICH database
- Randomisation
- Investigational medicinal product
- Safety reporting
- Site file
- Monitoring
- What next?
- Contacts



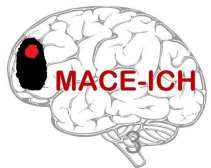


# Funding disclosures

- MACE-ICH is funded by the National Institute for Health Research (NIHR) under its Research for Patient Benefit (RfPB) Programme, grant reference NIHR-203080

Trial Registration: ISRCTN15383301  
CTA reference: 19162/0239/001-0001  
EudraCT Number: 2022-000283-22  
IRAS Project ID: 1004870  
Trial Sponsor: Nottingham University Hospitals NHS Trust

FUNDED BY





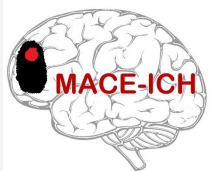
## Intracerebral Haemorrhage (ICH)

- ~22,500 ICHs each year in UK.
- ~1,500 result in severe brain swelling.
- Greater brain swelling/oedema → death or severe disability (mRS =4-5)
- Mortality/disability following ICHs is significantly higher than ischaemic strokes.

## Existing treatment

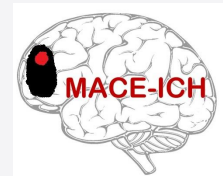
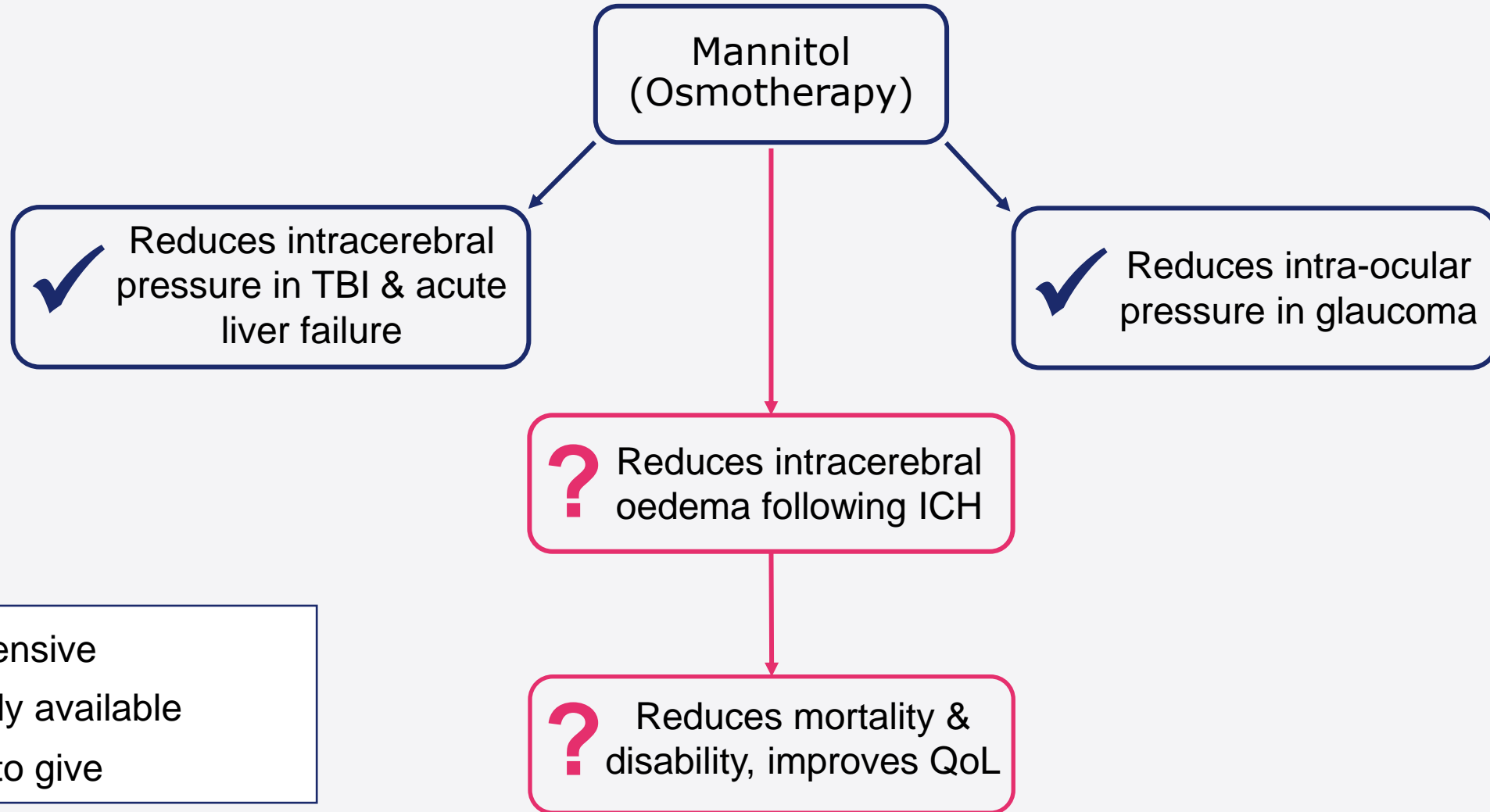
- Very limited:
  - Surgical decompression? Weak evidence. High risk of complication, particularly for elderly. Not routinely available.
  - Corticosteroids? No evidence. Likely to worsen patient's condition.
  - Osmotherapy? A potential solution?

Cerebral oedema



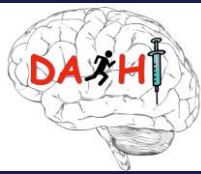


# Rationale





# Study Design, Objectives and Outcomes



**STUDY DESIGN:** A multicentre, prospective, randomised, open-label, blinded-endpoint trial (of mannitol vs standard care)

## PRIMARY

**Objective:** To determine the feasibility and inform the design and conduct of an adequately powered, pragmatic, prospective multi-centre RCT testing mannitol as a treatment for cerebral oedema in spontaneous ICH.

**Outcomes:**

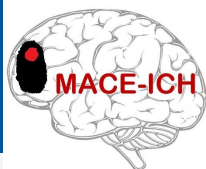
- No. of patients screened
- No. of patients eligible
- No. of patients screen-failed
- Recruitment rate
- Treatment adherence
- General feasibility

## SECONDARY

**Objective:** To provide preliminary data on the effect of mannitol on secondary outcomes including clinical, radiological, laboratory, safety and health-economics.

**Outcomes:**

- Assessment scores (GCS, NIHSS, mRS, etc)
- Changes in oedema
- Health economics
- Safety outcomes (death, sepsis, thrombophlebitis, hypotension, renal impairment, hyper/hyponatremia)



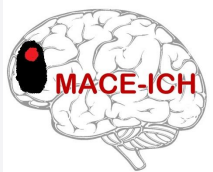


## Inclusion criteria

- Adults  $\geq 18$  years
- Spontaneous ICH (confirmed by brain imaging) with estimated largest diameter  $> 2\text{cm}$
- $\leq 72$  hours since onset (or from last seen healthy)
- Cerebral oedema with or without evidence of mass effect
- At risk of developing oedema (limited GCS  $< 9$  (eye opening and motor only) and NIHSS  $> 8$ )
- Signed consent (participant, personal or professional representative or independent physician).

## Exclusion criteria

- GCS  $< 5$
- Premorbid mRS  $> 3$
- Isolated subarachnoid haemorrhage
- Haemorrhage known to be from: trauma or venous thrombosis or arteriovenous malformation or brain tumour or transformation of cerebral infarct or cerebral aneurysm or thrombolytic drug
- Known hypersensitivity to mannitol
- **Severe renal failure (e-GFR  $< 30\text{ml/min}$  or dialysis)**
- Severe pulmonary oedema/cardiac failure
- Hypotension at baseline (SBP  $< 90$  mm Hg)
- Anuria
- Patient unwilling to participate
- Geographical or other factors which prohibit follow-up
- Pre-existing comorbidity with pre-ictal life expectancy  $< 6$  months
- Severe dementia
- Planned for palliative care
- **Severe hypernatremia (sodium  $> 160$  mmol)**
- **Severe hyponatremia (sodium  $< 125$  mmol)**
- Patients in whom peripheral intravenous cannula cannot be placed
- Women of child-bearing potential with a positive pregnancy test at the time of admission, or lactating
- Planned neurosurgery





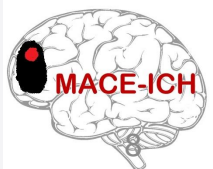
## Delegation log/database access

<https://stroke.nottingham.ac.uk/mace-ich/live/>

- Sign off by the PI via the electronic delegation log will allow access to the trial database
- Request access by emailing [mace-ich@nottingham.ac.uk](mailto:mace-ich@nottingham.ac.uk) along with:
  - Signed CV and GCP (both within last 2 years or as per local policy)
  - Signed training log (either live training or self-directed)
- Account details will then be sent via email
- Staff member will need to accept invitation to participate, which will send a notification to PI
- PI will need to log in and sign off each staff member, which adds the staff member to the online delegation log and database access is granted.
- **Investigators may only work on the trial once signed off on the delegation log**

Log ID	Investigator name/ID	Certificate/ date assessed or trained	Number of correct answers/score	Roles and responsibilities*	Delegation log status
13	[REDACTED]	<a href="#">P6Y3N6</a> 3 Jun 2021	- -	Site investigator BFHIJKLNOPQRSTY	9 Aug 2021 12:10 <b>Authorised</b> [REDACTED]
14	[REDACTED]	<a href="#">Y3K6X6</a> 3 Jun 2021	- -	Site investigator BFHIJKLNOPQRSTY	9 Aug 2021 12:10 <b>Authorised</b> [REDACTED]

**\*The PI must select whether code J should be applied as a delegated role to take consent (medics only). Code T should be applied as a delegated role to collect trial related blood samples\***







## Online randomisation process

- Patients will be randomised 1:1:1 to receive either:
  - Standard care plus 1 g/kg 10% single dose mannitol infusion at 10ml/min
  - Standard care plus 1 g/kg 10% mannitol at 10ml/min followed by a second dose 1 g/kg repeated at 24 hours
  - Standard care alone
- Randomisation will be performed locally using the trial's secure internet site
- Log into the MACE-ICH online database (<https://stroke.nottingham.ac.uk/mace-ich/live/>)
- Click to randomise a new patient
- Confirm the patient's eligibility and complete the randomisation form
- Once the form has been submitted, the database will display the allocated treatment
- An email will be sent to staff as confirmation

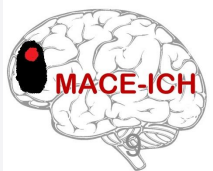
Thank you for your submission – your randomisation record has been successfully submitted to the database.

This participant was randomised to the **Single dose of mannitol** treatment group.

1 g/kg 10% single dose mannitol infusion at 10 ml/min, in addition to standard care.

Please **do not** write down the treatment group.

You may wish to print this page.





# Investigational Medicinal Product (IMP)

## IMP supply and handling

- **IMP characteristics**
  - Intravenous mannitol (Mannitol 10% solution for Infusion BP, Baxter Healthcare Limited PL 00116/0367)
- **IMP supply**
  - Sites will use their own mannitol from standard NHS hospital supplies
- **IMP storage**
  - The IMP will be kept in a secure, limited access storage area, such as a clinical room used for other drug storage and/or preparation.
  - IMP may be kept on the relevant ward/department to be accessible and allow treatment to start promptly as soon as the patient is randomised.
  - Room temperature (15-25°C).
  - Sites should follow their standard procedures for temperature monitoring (ideally a min and max temperature every weekday (excluding bank holidays))
  - Avoid sudden shock of the product (e.g. dropping) to prevent crystallisation.
  - The IMP will be kept as ring-fenced trial medication with study specific labelling

### Labelling

Batch Number, Expiry Date and Storage Conditions will be included on the original pack labelling.

To comply with Annex 13 labelling requirements, the following label should be added to the infusion bag:

For Intravenous use only

**MAnnitol for Cerebral oEdema after IntraCerebral Haemorrhage  
(MACE-ICH)  
Mannitol Infusion 10% (500ml)  
To be infused in accordance with the protocol.**

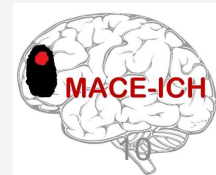
Participant Name \_\_\_\_\_

Participant ID Number \_\_\_\_\_

Chief Investigator Dr Kailash Krishnan

Sponsor: Nottingham University Hospitals NHS Trust

EudraCT Number 2018-001904-12







# Investigational Medicinal Product (IMP)

## IMP dispensing and accountability

### Stroke Unit/Ward/Department

- Upon receipt of IMP from the site Pharmacy, the details should be recorded on the MACE-ICH Stroke Unit IMP Accountability Log
- Following randomisation of a participant to treatment arm 1 or treatment arm 2, an intravenous infusion bag should be selected from the available trial stock and the participant name and trial number added to the label on the infusion bag.
- If returning IMP to the site Pharmacy (e.g. unused or expired pack) a MACE-ICH Return of Clinical Supplies form must be completed to accompany the packs. The Stroke Unit IMP Accountability Log should be completed, documenting return to the site Pharmacy.



Appendix 3

MACE-ICH Stroke Unit - IMP Accountability Log

Receipt				Issued to Subject						Return to Pharmacy			Comments
Date Received (dd/mm/yyyy)	Batch Number	Expiry Date	Received By	Date Issued (dd/mm/yyyy)	Subject Trial ID Number	Subject Name	Subject Hospital Number	Issued By	Check By	Date Returned to Pharmacy (dd/mm/yyyy)	Quantity Returned	Returned By	



Appendix 4

RETURN OF CLINICAL TRIAL SUPPLIES  
Mannitol for Cerebral oEdema after IntraCerebral Haemorrhage (MACE-ICH): a feasibility trial  
Local Investigator: ..... Site: .....

The following clinical trial supplies have been returned to pharmacy

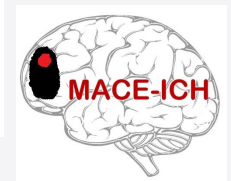
Description	Number of Bags Returned	Batch Number	Expiry Date
Mannitol infusion 10% 500ml			

Stroke Unit Staff	Date	Pharmacy Staff	Date
Returned by		Checked & Received by	
Print Name		Print Name	

For Pharmacy Use Only

Action	Signature & Date	Outcome	Signature & Date
To be quarantined in pharmacy			
To be sent for destruction			
To be returned to Stock			

1 copy to investigator file 1 copy to pharmacy file






# Investigational Medicinal Product (IMP)

## IMP dispensing and accountability

### IMP destruction

- Retain all returned unused infusion bags in pharmacy until permission is given to destroy.
- Destruction should be carried out by the site Pharmacy according to local SOPs, only after any discrepancies have been investigated and satisfactorily explained.
- Reconciliation will be accepted and confirmed in writing by the sponsor/representative prior to any destruction taking place. Destruction will be documented on the MACE-ICH IMP Destruction Log which should be filed in the pharmacy site file.
- Destruction of any study medication that is unused at the end of the study or has expired should only be completed following written approval from the



Nottingham University Hospitals **NHS**  
NHS Trust  
Pharmacy Department Clinical Trials Service

**Appendix 5** RECORD OF IMP DESTRUCTION

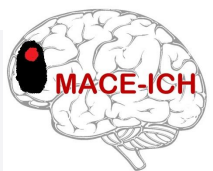
At the request of:  
 Sponsor: **Nottingham University NHS Trust** Sponsor Representative: .....  
 Address: Research & Innovation, Nottingham Health Science Partners  
 C Floor, South Block  
 Queens Medical Centre  
 Derby Road  
 Nottingham  
 NG7 2UH  
*(Attach a copy of the authorisation email/correspondence)*

*The following IMP have been sent for destruction by pharmacy according to local SOPs for destruction of pharmaceutical waste*  
 Study Title: **MANNITOL FOR CEREBRAL OEDEMA AFTER INTRACEREBRAL HAEMORRHAGE (MACE-ICH): A FEASIBILITY TRIAL**  
 EudraCT Number: 2022-000283-22

Description	Quantity	Batch Number	Expiry Date
Mannitol Infusion 10% 500mL			

Documented for destruction by:.....Date:.....  
 Name (PRINT): .....Title:.....  
 Verified and sent for destruction by:.....Date:.....  
 Name (PRINT):.....Title:.....

Completed forms to be filed in the Pharmacy File.





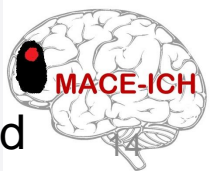
## IMP prescription and administration

### ■ Prescribing the IMP

- IMP should be prescribed by appropriately trained medical practitioners.
  - ***Dr's do not need to be on delegation log to prescribe***
- Record on the patient's drug chart or on the electronic prescribing and medicines administration system, referenced as part of the MACE-ICH trial.
- The research team will record administration of the IMP on each participant's CRF, including dates, quantity, batch/serial numbers, expiry dates and trial number assigned to each participant.

### ■ Administering the IMP

- The treatment should be administered by clinical staff in accordance with local policy.
- The infusion should be visually inspected before administration to ensure it is free from particles or crystallisation and suitable for use.
- Administer via an infusion pump using a giving set with an in-line filter (15 micron).
- At the end of each infusion, the bag, tubing and intravenous line should be visually inspected.
- If for any reason the study drug is stopped (e.g. intravenous cannula change), treatment must be commenced as soon as possible and continued. In the event of the infusion being stopped for >15 minutes during the infusion or if more than 10% of the infusion is not administered, the reason should be recorded on the CRF.





# Investigational Medicinal Product (IMP)

## IMP dosage and treatment regime

- Providing the patient meets the inclusion criteria, they will be randomly assigned to either:
  - Arm 1: Standard care plus 1 g/kg 10% single dose mannitol infusion at 10ml/min
  - Arm 2: Standard care plus 1 g/kg 10% mannitol at 10ml/min followed by a second dose 1 g/kg repeated at 24 hours
  - Arm 3: Standard care alone

Participants randomised to Arm 2, to receive the second dose at 24 hours, will receive mannitol only if the serum osmolality is <320 mOsm/Kg and sodium <160 mEq/L

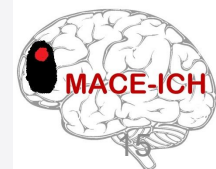
### Calculated serum osmolality:

$$2 \times (\text{Na}^+) + \text{Glucose} + \text{Urea (all in mmol/L)}$$

<https://www.mdcalc.com/calc/91/serum-osmolality-osmolarity>

Weight (kg)	Dose (based on 1g/kg)	Volume and rate of Mannitol 10% solution (infuse at 10mL/min = 600mL/hour)
40	40g	400mL over 40mins
45	45g	450mL over 45mins
50	50g	500mL over 50mins
55	55g	550mL over 55mins
60	60g	600mL over 60mins
65	65g	650mL over 65mins
70	70g	700mL over 70mins
75	75g	750mL over 75mins
80	80g	800mL over 80mins
85	85g	850mL over 85mins
90	90g	900mL over 90mins
95	95g	950mL over 95mins
100	100g	1000mL over 100mins

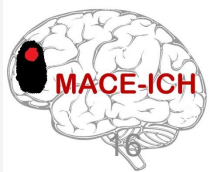
\*There is no formal guidance about dosing in extremes of bodyweight. Review risk / benefit with fluid balance and comorbidities. Infusion time can be extended if concerns re: fluid overload.





## Reporting timeframes

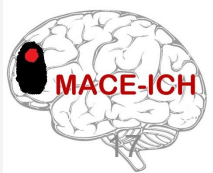
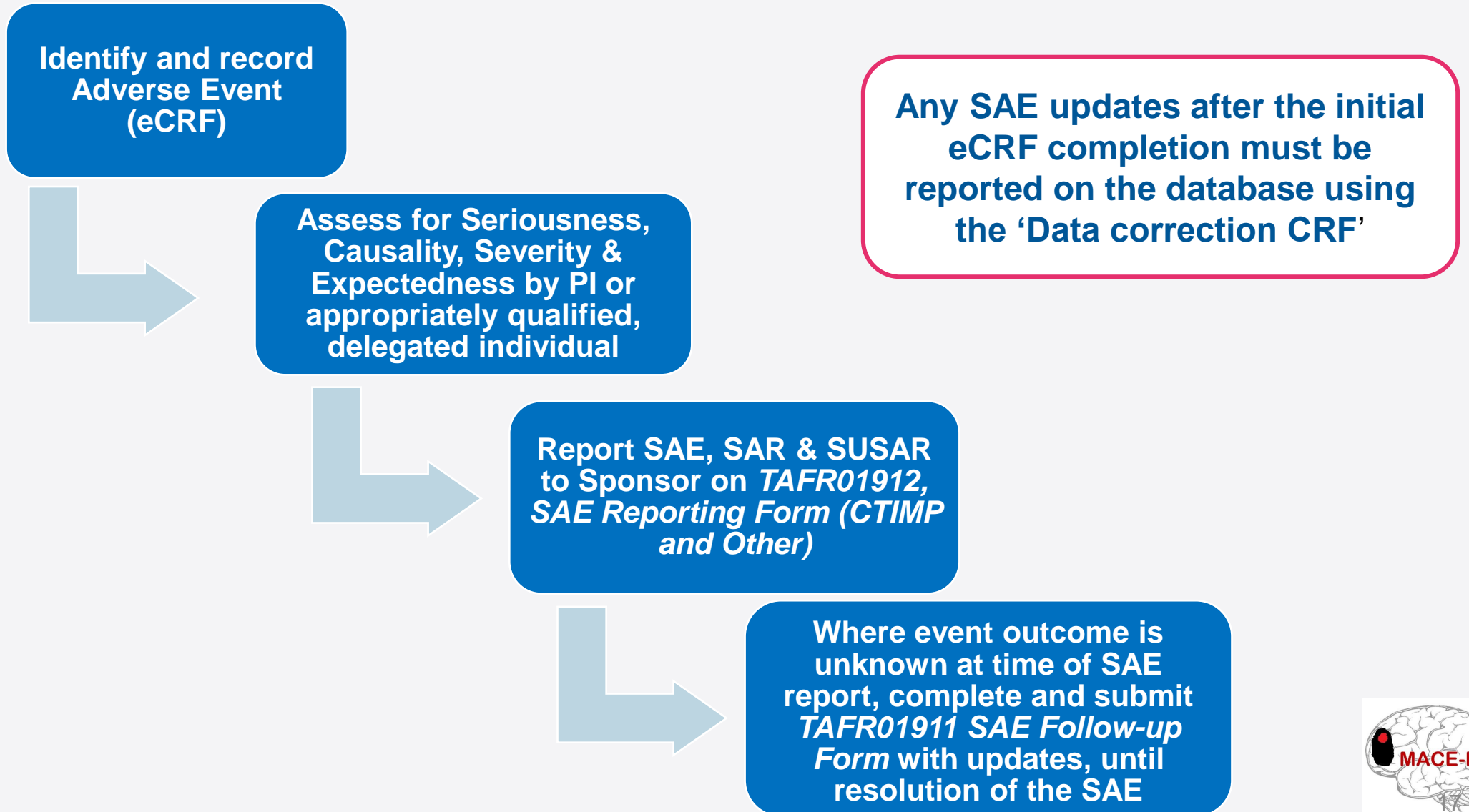
- All SAEs/SARs/SUSARs during infusion and post-treatment up to and including Day 28 will be collected.
- Fatal SAEs and safety outcome events (relating to thrombophlebitis; hyper/hyponatremia; pulmonary oedema; hypotension; renal impairment) will be reported up to and including Day 180
- All SAEs/SARs/SUSARs are reported using the following process:
  - Complete the 'Serious Adverse Event or outcome' CRF on the trial database
  - Completion of the above CRF will partially auto-populate the 'TAFR01912 Serious Adverse Event Reporting Form (CTIMP and Other)'. Please download and complete all remaining items on the form, then email to: [RDSAE@nuh.nhs.uk](mailto:RDSAE@nuh.nhs.uk) (cc in [mace-ich@nottingham.ac.uk](mailto:mace-ich@nottingham.ac.uk))
  - Where event outcome is unknown at the time of the initial SAE report, please complete 'TAFR01911 SAE Follow-up Form' with updates, until resolution of the SAE. This form should be emailed to: [RDSAE@nuh.nhs.uk](mailto:RDSAE@nuh.nhs.uk) (cc in [mace-ich@nottingham.ac.uk](mailto:mace-ich@nottingham.ac.uk))
  - Any SAE updates must also be reported on the trial database using the 'Data correction request' CRF
- After discharge, participants will be asked to contact the study site immediately in the event of a serious adverse event.
- Sites must inform the Coordinating Centre, Chief Investigator and Sponsor immediately (**within 24 hours**) of any serious adverse events, and the CI will review seriousness and causality in conjunction with any treating medical practitioners.
- Sites should record and monitor all adverse events until resolution, stabilisation or until it has been shown that the study treatment is not the cause.
- SAE forms must be signed off by the PI and filed in the site file







# Safety Reporting





# Pharmacy Site File

- Please see the MACE-ICH documents page which can be accessed via the following link:  
<https://stroke.nottingham.ac.uk/mace-ich/docs/>
- The coordinating centre will not send hardcopy site files in the post for reasons of sustainability and version control. Sites are welcome to print and maintain a physical ISF if they prefer.
- The coordinating centre will send any amendment notifications electronically with guidance of if any documents need superseding, we will then put the updated documentation on the MACE-ICH website.
- Must be stored in a secure location and only accessible by the research team

MACE-ICH trial  
Mannitol for Cerebral oedema after IntraCerebral Haemorrhage

### Trial documents

**Emergency numbers**

For urgent medical enquiries (including unblinding), and for randomisation problems, you can contact the following emergency mobile numbers.  
07771 542 937 07798 670 726 07725 580 092 07810 540 604

*Last updated: 17 November 2023*

**Approved protocol**

- [01 - 1004870 MACE ICH Protocol Final v2.0 27Jul2023 Clean.pdf](#) (updated 10 days ago)

**Trial documents**

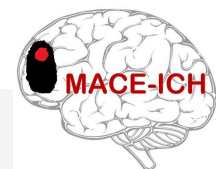
- [Contact sheet V1.0 20231010.pdf](#) (updated 5 hours ago)
- [Eligibility Checklist V1.0 20231013.pdf](#) (updated 4 hours ago)
- [File Note A1 - Trial Development Documents 20231009.pdf](#) (updated 4 hours ago)
- [File Note A3 - Funding letter 20231106.pdf](#) (updated 4 hours ago)
- [File Note A3 - Sponsorship Statement 20231106.pdf](#) (updated 4 hours ago)
- [File Note A4 Site File Delegation Log 20231009.pdf](#) (updated 4 hours ago)
- [File Note A6 - Randomisation and blinding 20231009.pdf](#) (updated 4 hours ago)
- [File Note Template V1.0 20230921.docx](#) (updated 31 minutes ago)
- [ISF Trial Identifiers Front Sheet V1.0 20231010.pdf](#) (updated 5 hours ago)
- [Medical Record Labels V1.0 20231115.docx](#) (updated 2 days ago)
- [Site File Index V1.0 20231115.pdf](#) (updated 20 minutes ago)
- [TAFR01501 Screening-Log V1.0 20231115.docx](#) (updated 3 hours ago)
- [TAFR01502 Enrolment-Log V1.0 20231115.docx](#) (updated 2 days ago)

**Site training**

- [TAFR01204 Training-Log V1.0 20231115.docx](#) (updated 2 days ago)

**Information sheets and consent forms**

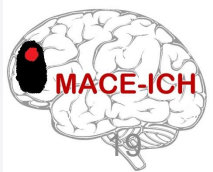
- [05 - 1004870 MACE-ICH Legal Representative Information Sheet v2.0 27Jul2023 Clean.docx](#) (updated 2 days ago)
- [06 - 1004870 MACE-ICH Legal Representative Pictorial Information Sheet v2.0 27Jul2023 Clean.docx](#) (updated 2 days ago)
- [03 - 1004870 MACE ICH PIS Final v2.0 27Jul2023 Clean.docx](#) (updated 2 days ago)
- [04 - 1004870 MACE ICH Participant Pictorial Info Sheet v2.0 27Jul2023 Clean.docx](#) (updated 2 days ago)
- [07 - 1004870 MACE ICH ICF Final v2.0 27Jul2023 Clean.docx](#) (updated 2 days ago)
- [08 - 1004870 MACE ICH Legal Rep Consent Form v2.0 27Jul2023 Clean.docx](#) (updated 2 days ago)





## Remote monitoring

- The trial coordinator will carry out the site monitoring visit remotely. A face-to-face visit may be triggered if there are ongoing concerns about a site despite remedies being suggested to resolve issues.
- The expectation is that sites will complete the monitoring documents, which will be signed off by the PI and returned to the Stroke Trials Unit. These documents include an ISF checklist and patient file checklists
- Sites will be notified of a sub-set of patients that have been randomly selected from the trial database to be monitored
- The completed monitoring documents will be reviewed by the trial coordinator and followed up with a report and action list



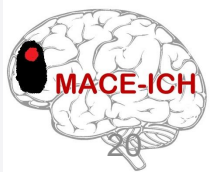


# What next?

Before we issue green light and you can start recruiting:

- ✓ Signed training log after today's session
- ✓ CVs and GCPs for trial staff
- ✓ Signed contract
- ✓ Confirmation of C&C from R&D
- ✓ Staff to be authorised by PI on the online delegation log

Please can we remind you to add [mace-ich@nottingham.ac.uk](mailto:mace-ich@nottingham.ac.uk) to your contacts list – not doing so may mean you miss important automated emails from our database (including randomisation and SAE alerts).





# MACE-ICH Contacts



Email: [mace-ich@nottingham.ac.uk](mailto:mace-ich@nottingham.ac.uk)



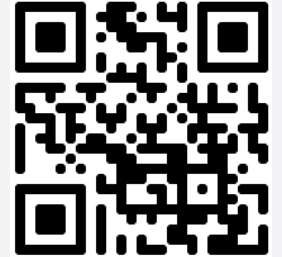
Website: <https://stroke.nottingham.ac.uk/mace-ich/>



Twitter: @MACE\_ICH\_Trial



Telephone: 0115 8231770



<https://stroke.nottingham.ac.uk/>



Dr Kailash Krishnan  
**Chief Investigator**



Prof Philip Bath  
**Deputy Chief Investigator**



Di Havard  
**Senior Trial Manager**  
0115 823 1775



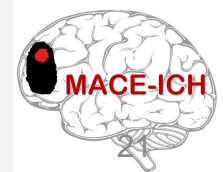
Solomon Adegbola  
**Follow Up Coordinator**  
0115 823 1770



Dr Jen Craig  
**Trial Manager**  
0115 823 1770

**Sponsor:** [ResearchSponsor@nuh.nhs.uk](mailto:ResearchSponsor@nuh.nhs.uk)

**Emergency contact phone numbers:**  
Please log in to the MACE-ICH database  
to access





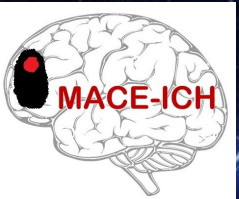
University of  
**Nottingham**

UK | CHINA | MALAYSIA

**NHS**

Nottingham  
University Hospitals  
NHS Trust

Questions?



This project is funded by the National Institute for Health and Care Research (NIHR) under its Research for Patient Benefit (RfPB) Programme (Grant Reference Number 203080). The views expressed are those of the author(s) and not necessarily those of the NIHR or the Department of Health and Social Care.

FUNDED BY  
**NIHR** | National Institute for  
Health and Care Research