



Metoclopramide for Avoiding Pneumonia after Stroke: MAPS-2

Recruitment update: to date we have a total of:

750

Thank you all for your efforts!

Congratulations to the team at Stockport for recruiting your first two participants!

Site update: We currently have a total of 69 sites open to recruitment (3 repatriation).



A big welcome to the team at recently activated site:

- Kings Lynn

A full list of open sites current open to recruitment can be found at:

<http://www.stroke-in-stoke.info/maps-2-study>



Are there any hospitals your patients are regularly transferred that we could approach to become repatriation sites? Please let us know!

Introducing: MAPS 2 Trial Manager - Becca Ward

“Hello everyone! I’m Becca the new trial manager on MAPS-2.

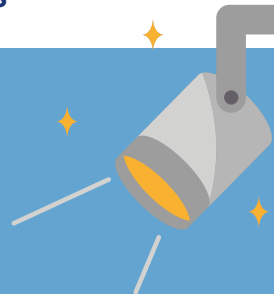
I’ve been working in Clinical Trials Research for the last 5 years with experience at site and coordinating centrally. I look forward to getting to know you all and being a part of the MAPS-2 team!”



Next month we would like to use this space to feature one of your teams! Please get some team photos ready for us to use and we will be in touch to request this and a short bio if selected!

Spotlight on Discharge REDCap CRFs

For our health economic outcome we need to know the duration of patients hospital stay. **Please the report date patients are discharged from all hospital care on the discharge to community CRF in REDCap.** Any questions please get in touch, this will be clarified by the team in the upcoming investigator meeting.



Metoclopramide for Avoiding Pneumonia after Stroke Trial

Discharge to the community v1.1

Investigator Meeting - Tuesday 21 May 2024 - 13:00

Please save the date for the next investigator meeting, we look forward to seeing as many of you there as possible!



Any Questions? ☎ 0115 823 1665 ✉ MAPS-2@nottingham.ac.uk