



## Metoclopramide for Avoiding Pneumonia after Stroke: MAPS-2

**Recruitment update:** to date we have a total of:

**905**

Thank you all for your efforts!

**Congratulations and thank you to the team at Coventry for recruiting your first participant into the trial!**

**Site update:** We currently have a total of 68 sites open to recruitment (7 repatriation).



We are still looking for more sites. Please let us know if you have any suggestions for sites near you!

A full list of sites currently open to recruitment can be found at:

<http://www.stroke-in-stoke.info/maps-2-study>



### Guidance - Estimating Weight

Most of the time you will be aware of the participants weight from the existing medical records or on the guidance of their relatives.

If you are unsure and need to estimate weight it can be helpful to compare to someone of the same height and sex as the participant rather than in relation to yourself.

If you weigh the patient after randomisation, and a dose adjustment is required this does not need to be reported as a deviation.



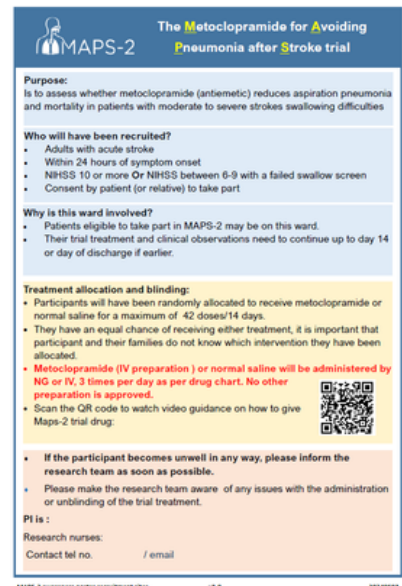
### Staff Awareness Posters

We have an awareness poster that can be displayed to educate ward staff about the MAPS -2 trial. This also includes a link to video guidance on how to give the MAPS-2 trial drug.

You can find the poster and slides from our recent investigator meetings on our documents webpage.



(<https://stroke.nottingham.ac.uk/maps-2/docs/public.php>)



### Save the date!

### Upcoming Investigator Meetings

Tuesday - 24 September 2024 - 13:00  
Friday - 25 October 2024 - 13:00  
Tuesday - 26 November 2024 - 13:00



## Metoclopramide for Avoiding Pneumonia after Stroke: MAPS-2

### Meet the team - Addenbrookes Cambridge

Addenbrookes Hospital is the regional thrombectomy site for the East of England. Situated in the historical city of Cambridge our hyper-acute stroke unit has 4 hyper-acute, 10 acute and 22 rehab beds. We are very fortunate that our research office is shared with our stroke alert team colleagues and is located on the stroke ward, giving us proximity to our stroke patients and ward colleagues which has undoubtedly contributed to our good working relationships. Our stroke research team consists of two research nurses: Alex and Karolina, a research therapist: Arshi, and a trials coordinator: Jobbin. Our PI for MAPS-2 is Dr Kayvan Khadjooi.

Between Monday and Friday, we allocate a stroke researcher to the SAT team. We attend every stroke referral within the hours of 08:00-18:00, giving us the opportunity to assess our potential participants right as they come in the front door (or even in the back of the ambulance!). This not only helps with identifying potential participants as early as possible, but also builds rapport with the patient. Additionally, we have another researcher allocated to the ward. Each morning, the allocated researcher meticulously screens all stroke admissions and then adds them to our shared electronic central screening log. This allows us to identify any potential MAPS-2 patients that may have come in out of hours. Our team also works flexibly, we often stay late out of hours to recruit potential participants and have funding for a once-a-week bank shift that we utilise most often on a Sunday. This is usually snapped up, allowing us to deliver research 6 days a week.



Team working and flexibility are always a priority for us and are the main contributors to our success at recruiting to trials such as MAPS-2. We are a very research passionate team, with a goal to offer every stroke patient the opportunity to take part in research. 😊

Bio by Alex McGovern -  
Clinical Research Nurse

The MAPS-2 team would like to thank the team at Cambridge for being such a consistently brilliant recruiter to our trial and for contributing to our Newsletter and Investigator meeting!

Your commitment to our trial is greatly appreciated!

**THANK YOU!**

Does your site want to be featured next?  
Got some top-tips to share? Let us know!

