

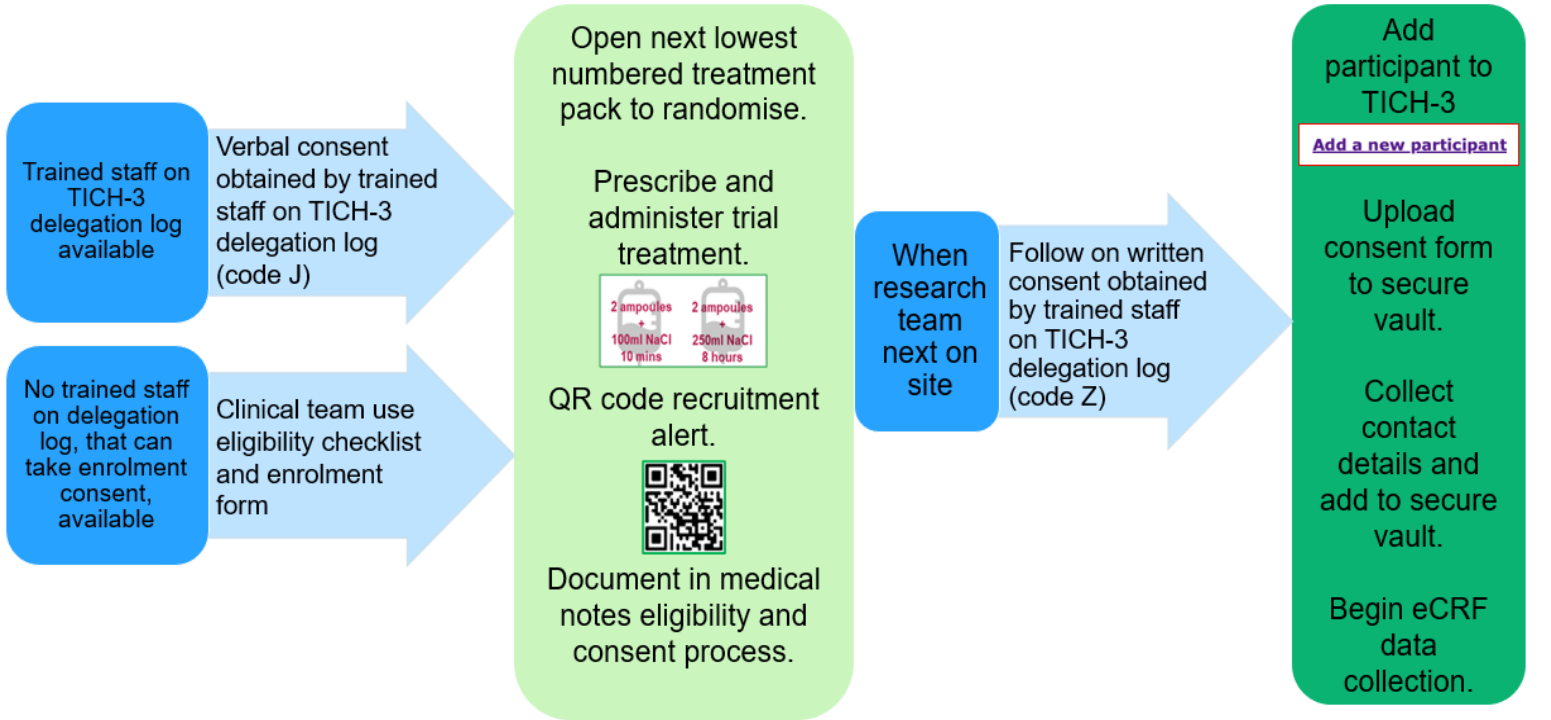
Inclusion

Adults (≥ 18 years) within 4.5 h of onset of acute spontaneous ICH (confirmed on brain imaging).

It is not necessary to exclude underlying vascular lesions (e.g. aneurysms) – but if they are known that is not 'spontaneous' ICH so participant should not be included. Patients with amyloid angiopathy can be included.

Exclusion

- Known indication for TXA treatment (e.g. traumatic brain injury).
- Known contra-indication for TXA treatment (e.g. seizures or known active venous thromboembolism).
- Patient known to be taking therapeutic anticoagulation with warfarin or low molecular weight heparin at time of enrolment. **Patients taking direct oral anticoagulants can be included and are not excluded.**
- Massive ICH (usually when haematoma volume >60 ml). Estimated HV using automated software, ABC/2 calculation, or simple measurement of largest haematoma diameter – **if no volume exclude if greater than 5cm diameter**
- Severe coma, Glasgow Coma Scale <5 .
- Decision for palliative (end of life) care.



Assessing eligibility

Can be completed by any clinician they do not need to be on the TICH-3 delegation log.

Delegation log

1. Complete TICH-3 training - available on <https://stroke.nottingham.ac.uk/tich-3/docs/>
2. Complete self-referral form https://stroke.nottingham.ac.uk/sif/live/sif_training_self-referral.php?sid=TICH-3

Emergency phone numbers

For urgent medical enquiries and eligibility queries please call the following emergency mobile numbers.

- 07725 580 092
- 07736 843 592
- 07798 670 726
- 07810 540 604