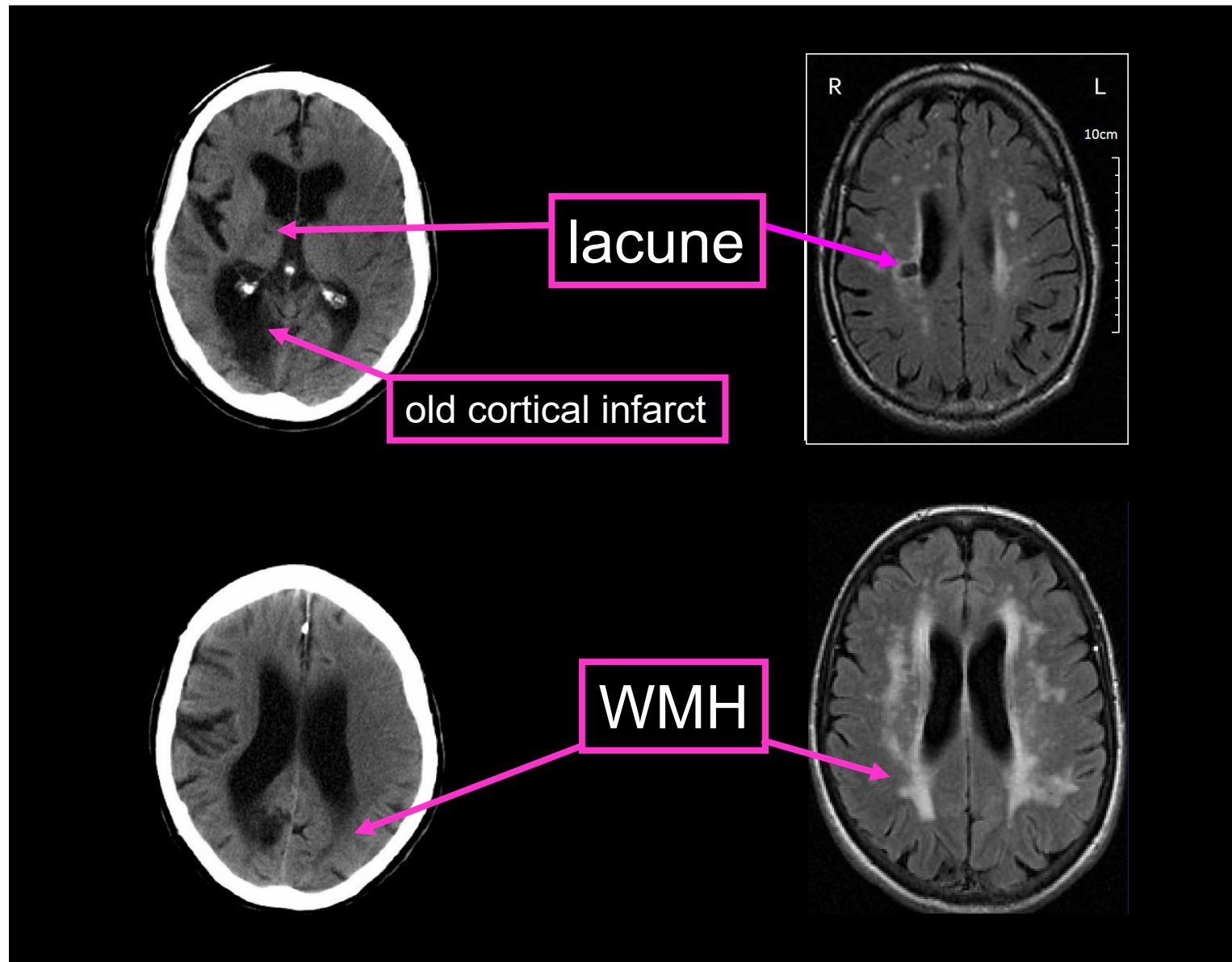




Chronic Small Vessel Disease (SVD) imaging features and SVD score

Part C - CT

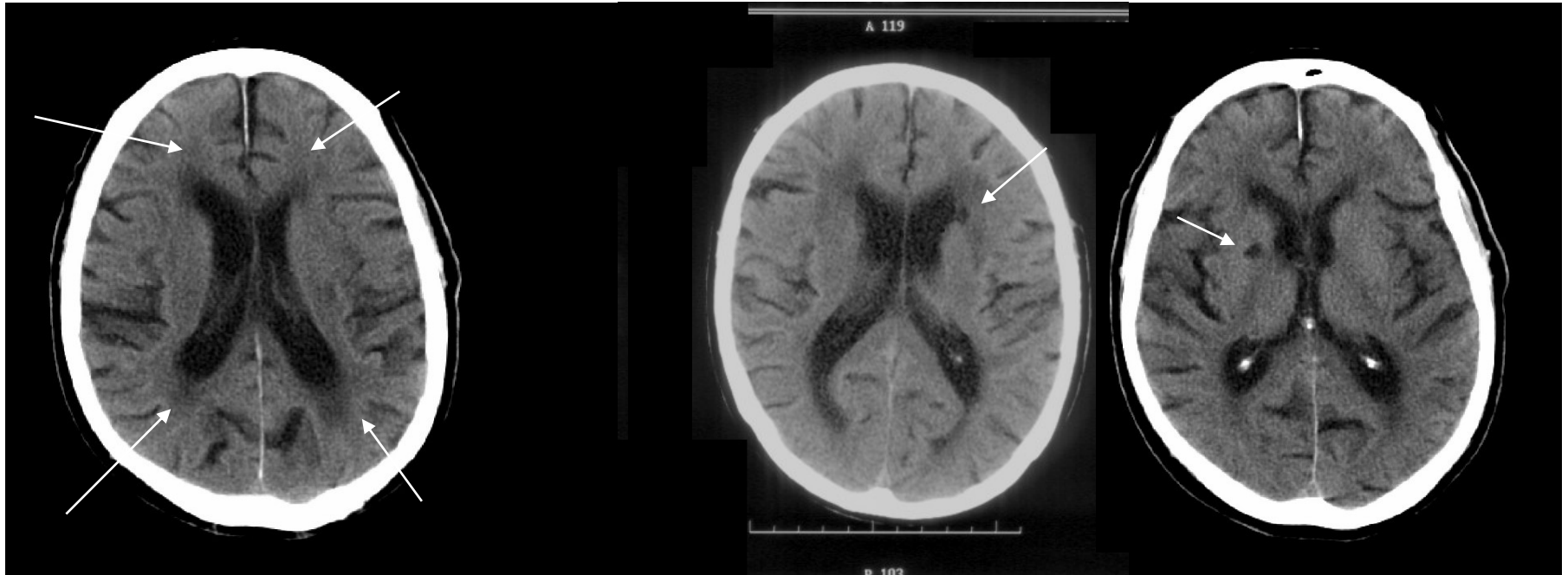
SVD Features also visible on CT



SVD Features on CT

White matter hypoattenuation
(‘leukoaraiosis’)

Lacune



SVD score:

Moderate or severe ie

Fazekas either:

Deep $\geq 2 = 1$ point

P-V 3 = 1 point

$\geq 1 = 1$ point

CT scanning

Only rate:

- White Matter Hypoattenuation ('leukoaraiosis')
- Lacunes

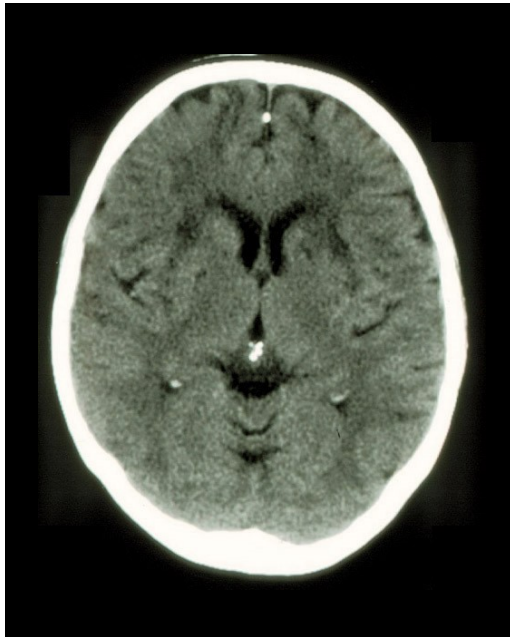
SVD score points:

1 point for ≥ 1 Lacune

1 point for WMH = Fazekas 3 in periventricular region and ≥ 2 in deep white matter.

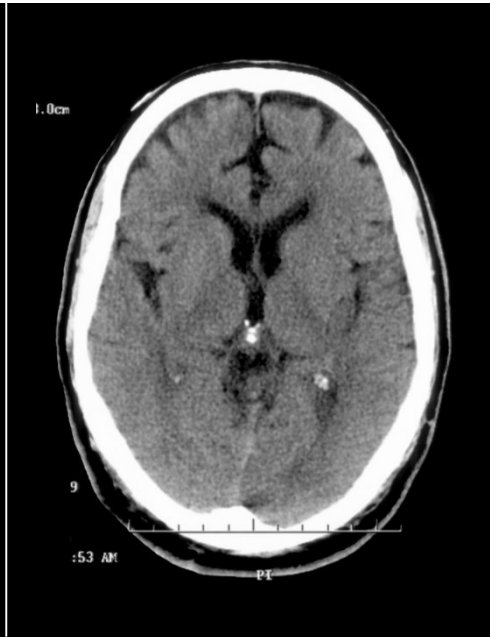
Total SVD score = 2

White Matter Hypoattenuation - 3 examples



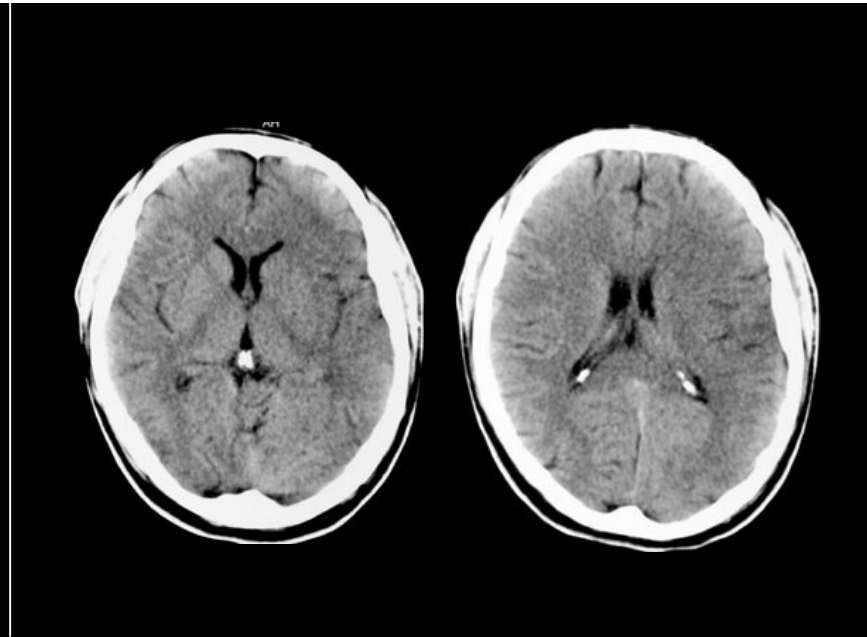
Obvious deep WMH =
Fazekas grade 2;

SVD score = 1 pt



Minor periventricular
no deep WMH =
Fazekas grade 1;

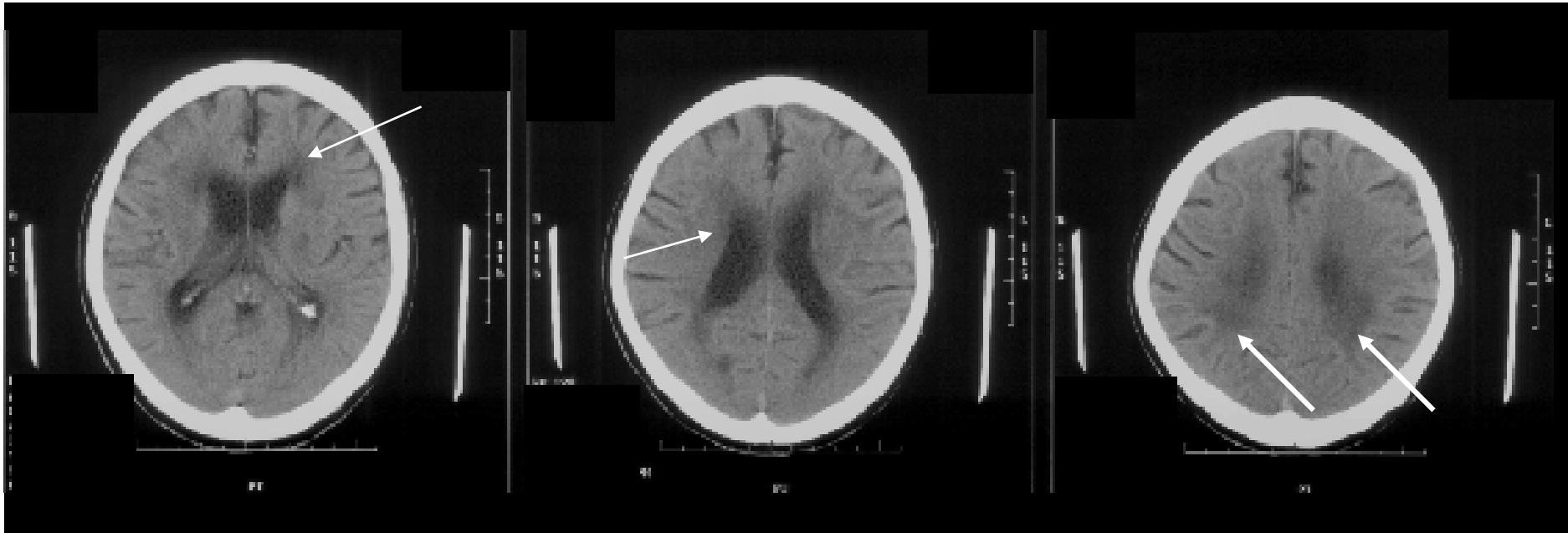
SVD score = 0 pt



No WMH = Fazekas 0;

SVD score = 0 pt

White Matter Hypoattenuation - 1 example

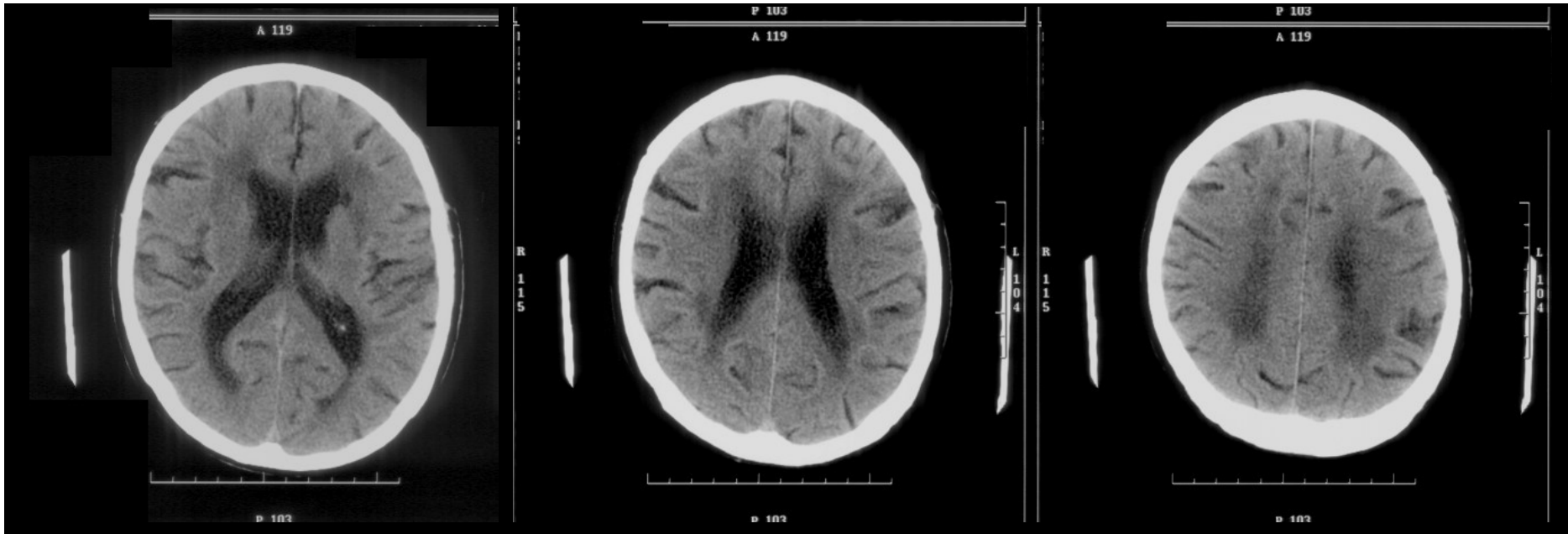


Obvious WMH around the ventricles =
Fazekas periventricular grade 3 (white arrows)

Obvious WMH in the deep white matter going out to
cortex = Fazekas deep white matter grade 3 (yellow
arrows)

SVD score: 1 point

White Matter Hypoattenuation - 1 example



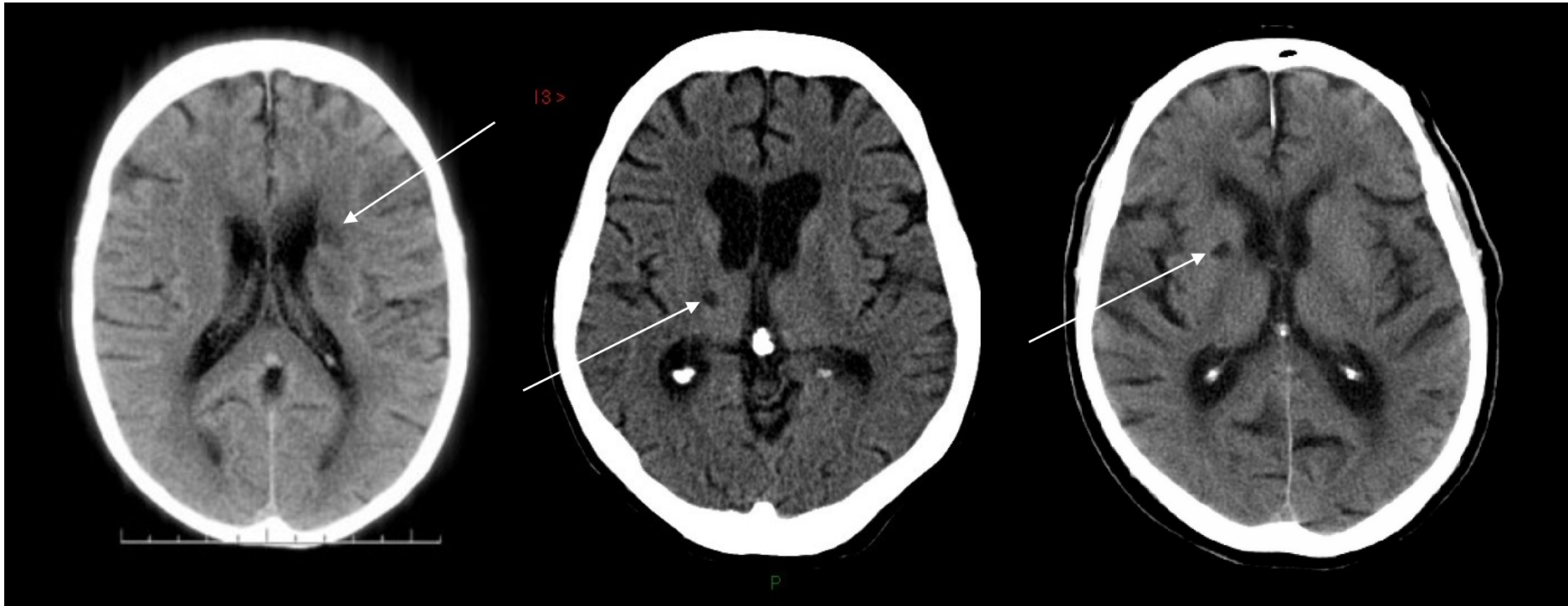
Obvious WMH around the ventricles = Fazekas periventricular grade 3

Obvious WMH in the deep white matter going out to cortex = Fazekas deep white matter grade 3

SVD score: 1 point

[also note the lacune = another SVD point; SVD score = 2]

Lacunes = CSF containing holes



Small and black like CSF, or at least much darker than normal brain

One or more lacunes = 1 pt on SVD score