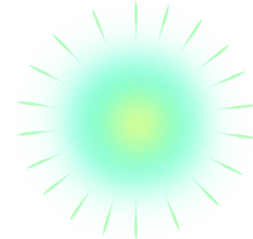
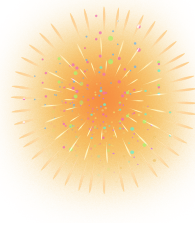
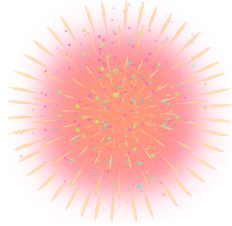


Metoclopramide for Avoiding Pneumonia after Stroke: MAPS-2

A very happy new year from the MAPS-2 trial team!



Trial Update:

**MHRA Approval: 22/10/2021
HRA & REC Approval: 17/11/2021**

We are currently aiming to have our first recruiting centres open by the end of January / early February 2022. A huge thank you to all sites and R&Ds for your continued efforts in reviewing the MAPS-2 trial and arranging capability & capacity!

If you would like to discuss the trial in more detail, or need any assistance with any trial-related queries, please get in touch with the MAPS-2 trial team by using the following email:

MAPS-2@nottingham.ac.uk

Amendments:

MA/01/21 - Approved on 01/12/2022:

Addition of new recruiting sites, withdrawal of some recruiting sites, and changes in PI at one of our recruiting sites.

There have been no substantial amendments to MAPS-2!

Conferences:

A big thank you to all those who showed their support by attending the Nottingham Stroke Trials Unit presentation at the UK Stroke Forum in November/December 2021!

An abstract for MAPS-2 has been submitted for the European Stroke Organisation Conference (ESOC) in May 2022.

Associate PI Scheme:

MAPS-2 has been registered for the NIHR's Associate PI scheme.

What is the Associate PI Scheme?

The NIHR's Associate PI scheme is a six month training opportunity, providing experience for healthcare professionals starting their research career.

Healthcare professionals who would not normally have the opportunity to take part in clinical research in their current role have the chance to experience what it means to work on, and deliver, a NIHR portfolio trial under the mentorship of their local PI.

Individuals who complete this training will receive formal recognition of engagement in NIHR Portfolio research studies, through the certification of **Associate PI status**.

This training opportunity is endorsed by the NIHR and Royal Colleges

If you are interesting in participating in the Associate PI scheme, please use the following link to access the application form:

<https://docs.google.com/forms/d/e/1FAIpQLScv5XTwVbbRNXhru1jDU70u1bE8xw3UaHW2XCoYmQ4FIXgcvQ/viewform>

Common MAPS-2 FAQs:

What is the planned recruitment end date?

30th October 2024.

What is the end-of-study date?

30th April 2025

What involvement is required from Pharmacy?

There is very minimal involvement required from your Pharmacy. They will only need to dispense the IMP (metoclopramide or saline solution) for usage in the trial. The IMP is not trial-labelled, and should be stored as per the local guidelines.

Are there any requirements to use a specific brand of metoclopramide?

No. Any brand of metoclopramide authorised for use in the UK can be used.

What database / eCRF will MAPS-2 be using?

RECap & a separate bespoke system to aid in randomisation and uploading of required documents.

Are sites required to submit chest x-ray images centrally?

No - we are only requesting the chest x-ray reports. These will be uploaded via our MAPS-2 bespoke system.

Are any additional blood samples for laboratory analysis required in MAPS-2?

No additional blood tests are required. The results of blood tests performed as per standard of care prior to study entry will, however, be collected in the database.

Can the way the method of IMP administration be changed (i.e nasogastric to intravenous or intravenous to nasogastric) throughout the fourteen days?

Yes - the method of IMP administration can be changed if the condition of the patient changes in the first fourteen days.